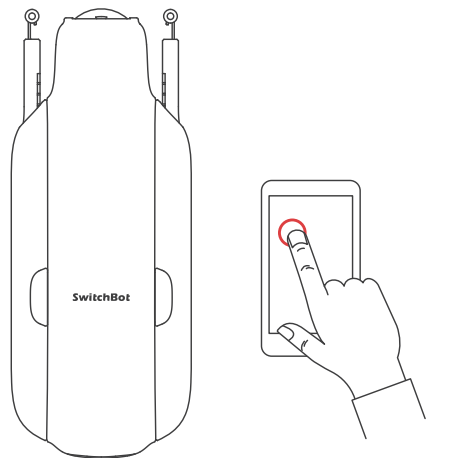


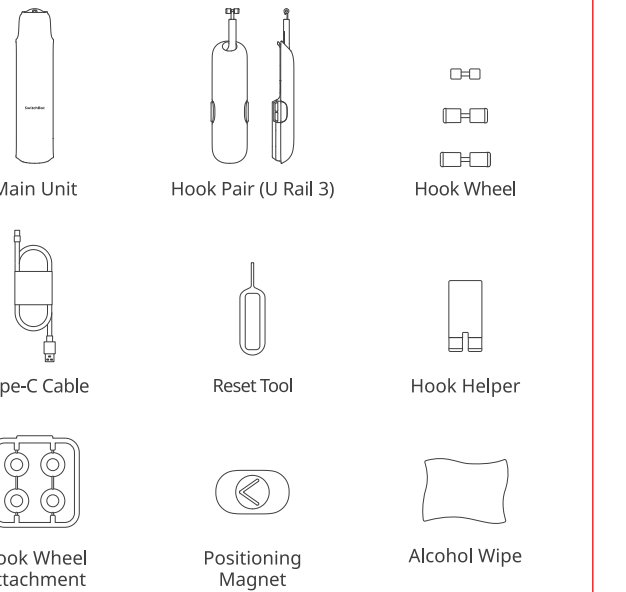
SwitchBot Curtain U Rail 3

User Manual



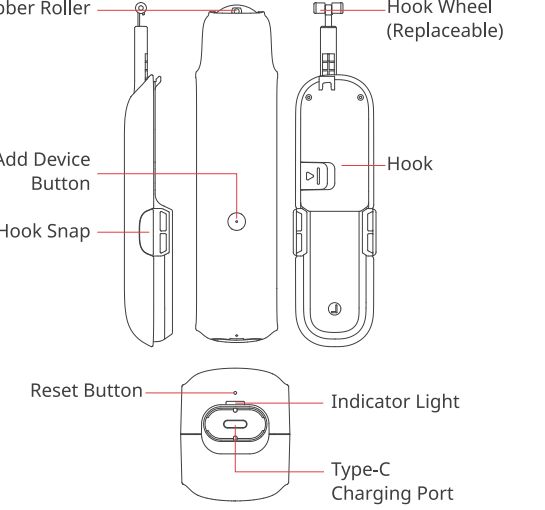
※ Please read this user manual carefully before using your device.

Package Contents



We will deliver different types and quantities of Hook Wheels according to different regions.

List of Components



Preparation

- You will need:
- A smartphone or tablet using Bluetooth 4.2 or later.
 - The latest version of our app, downloadable via the Apple App Store or Google Play Store.

Installation

- A SwitchBot account, you can register via our app or sign in to your account directly if you already have one.
 - A fully charged SwitchBot Curtain.
- Please note: If you intend to use Cloud Services for voice control, you will need a SwitchBot Hub (sold separately).
-

Step 1: Add your SwitchBot Curtain U Rail 3 to our app

Open our app and sign in to your account. Tap "+" at the top right-hand corner of the home page, find the Curtain icon, and select. Then follow the instructions to add your SwitchBot Curtain U Rail 3.

Step 2: Install SwitchBot Curtain U Rail 3 onto your curtain track

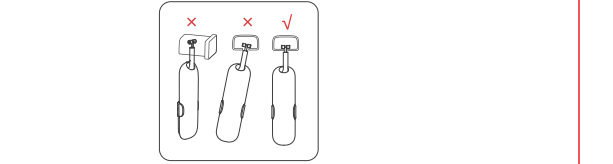
Find the best matching Hook Wheel

When you receive your device, a set of Hook Wheels will already be installed on your Hook Pair. There are also several different-sized sets of Hook Wheels inside the packaging to enable you to find a set that suits you best. Please follow the steps below to find the best matching set of Hook Wheels for your curtain track.

1. Insert the detachable Hook from the bottom gap of your curtain track and rotate it by 90° to fit. Slide it left and right to see if it operates smoothly, then tilt it back and forth to check if it is attached to your track correctly.

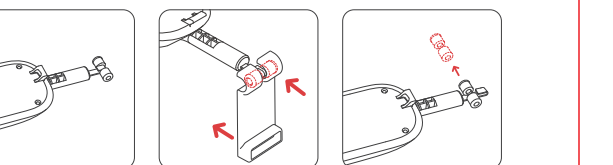
- If your Hook cannot be inserted onto your curtain track, or cannot be rotated after being inserted, replace it with a smaller set of Hook Wheels.
- Try pulling your Hook towards one side and tilt it, if it falls easily from the curtain track, you need to replace it with a bigger set of Hook Wheels.

If the Hook slides smoothly. You can continue the installation steps. If you have tried with every set of Hook Wheels provided and none of them worked as expected, please contact our customer support at support@switch-bot.com

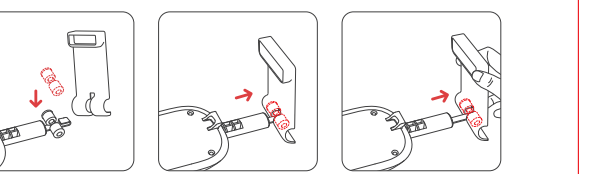


2. How to replace your Hook Wheels

① Detach the existing Hook Wheels from the detachable Hook (use the Hook Helper for an easier removal).



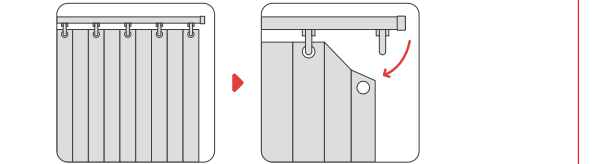
② Select one set of appropriately sized Hook Wheels. Flick the two plastic wheels to both sides to expose the metal bar in the middle. Attach a set of Hook Wheels to the Hook as shown in the picture. You should hear a clicking sound once it is firmly attached.



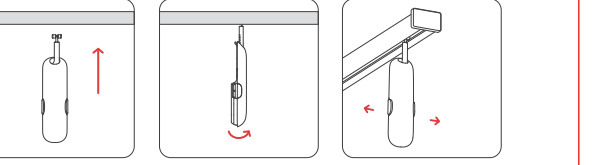
③ Repeat the same steps to replace the Hook Wheels on the other Hook with the Main Unit.

Installing SwitchBot Curtain U Rail 3 onto your curtain track

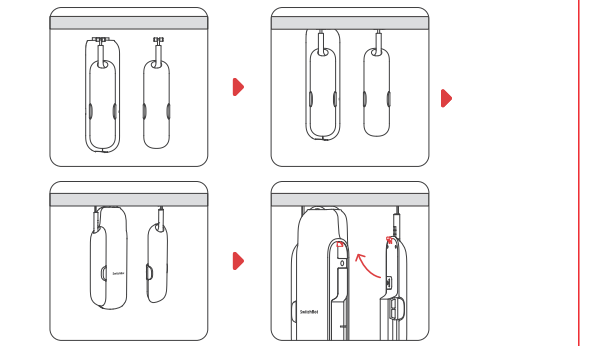
① Fully close your curtain, then remove the first curtain hook from the track.



② Insert the detachable Hook from the bottom gap of your curtain track and rotate it by 90° to fit the Hook Wheels on your track.



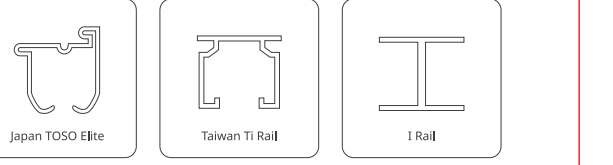
③ Insert the Hook with the Main Unit onto your curtain track. Pull down both Hooks, align the snaps to attach the detachable Hook back to the Main Unit. You will hear a clicking sound once firmly attached. The SwitchBot logo should be facing inwards.



Installation for Special Models

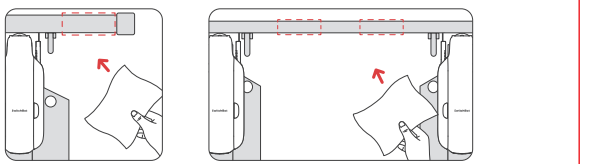
If SwitchBot Curtain U Rail 3 does not fit smoothly on your curtain track, your curtain track type may be the issue. Below are two examples of non-standard curtain tracks. Please scan the QR code below or visit the following website for more information.

<https://support.switch-bot.com/hc/en-us/articles/1500012094841>



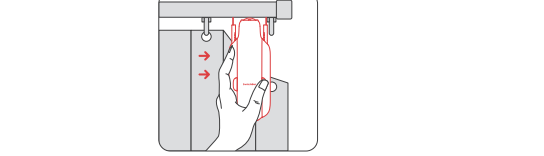
Step 3: Install Positioning Magnet

The positioning magnet will help close your curtains tightly if your curtain track is too slippery to run on. To ensure the magnet firmly attaches to the track surface, please use the wet wipe provided to clean the surface first. Dirt or dust will affect adhesion and may cause dropping at a later time.



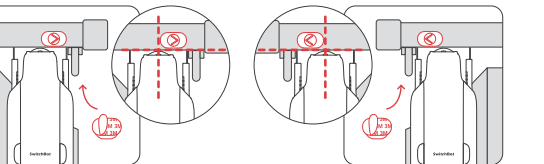
Installing on Regular U Rail Models

① Push your SwitchBot Curtain U Rail 3 to the fully closed position.

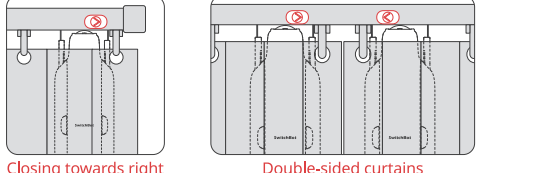


② Peel off the tape liner on the back of your magnet. Point the arrow to your curtains' closing direction, and stick it to your curtain track surface as shown in the picture below.

Please note: stick your magnet on the front of your curtain track, the same side of the SwitchBot logo on your device.



③ Hang your curtain back in place and hide SwitchBot U Rail 3 behind your curtain fabric.

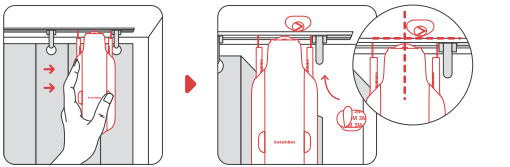


Installing on Special U Rail Models

U rail track that is embedded in the ceiling:

1. Push your SwitchBot Curtain to the fully closed position.
2. Point the arrow to your curtains' closing direction, and stick it to your curtain track as shown in the picture below.

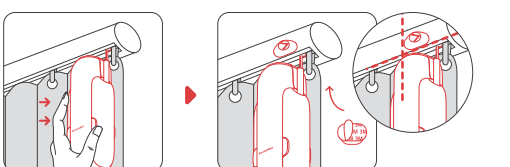
Please note: Stick your magnet to the ceiling on the same side of the SwitchBot logo on your device. Make sure the magnet is as close as possible to your SwitchBot Curtain's Main Unit.



U rail track that looks like rod in shape:

1. Push your SwitchBot Curtain to the fully closed position.
2. Point the arrow to your curtains' closing direction, and stick it to your curtain track as shown in the picture below.

Please note: Stick your magnet on the front of your curtain track, the same side of the SwitchBot logo on your device. Make sure the magnet is as close as possible to your SwitchBot Curtain's Main Unit.



Step 4: Calibration

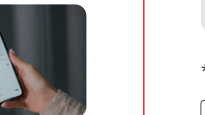
After you have added and installed SwitchBot Curtain U Rail 3, you will need to calibrate your device to set its route on your curtain track. Please follow the instructions in our app to make sure that the actual movement of your curtain is the same as the animation in the app. You can choose to recalibrate your device or change its opening direction whenever you want by navigating to Curtain > Settings > Calibration.

Please note: You can group two SwitchBot Curtain U Rail 3 devices together should you plan to open your curtains from the middle. Before you calibrate, please make sure the positions of both devices are the same as shown in our app.

Control Methods

App Control

Open and close your curtains with just the tap of a button. We offer intuitive app control for iOS and Android users, with weekly/bi-weekly updates. OTA firmware updates are also available to give you a better user experience.



Touch & Go

When SwitchBot Curtain U Rail 3 senses you drawing your curtain (more than 5 cm in distance), your device will automatically open or close depending on where your device is. Please note: you can turn this feature off in the Advanced Settings page of your device at any time.



*5cm lowers the possibility of false triggers by foreign objects, pets, children, etc.

Home Automation Using Voice Commands*

You can link multiple third-party smart assistants to your SwitchBot account to control your SwitchBot Curtain U Rail 3 or trigger Scenes using voice commands.

How to realize voice control and home automation:

- Connect your smartphone or tablet to the Internet.
- Set up a SwitchBot Hub (sold separately).
- Turn on Cloud Services via SwitchBot Curtain U Rail 3's Settings page.
- Link third-party services to your SwitchBot account.

Alexa, close the curtains.

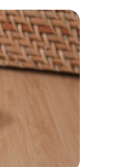
Hey Google, close my bedroom curtains.

Hey Siri, open the living room curtains.

* SwitchBot Hub required (sold separately).



Using Your Device with SwitchBot Remote



Device Settings

Light Sensor (Solar Panel)

By connecting your SwitchBot Curtain U Rail 3 to the SwitchBot Solar Panel 3 (sold separately), you can set up automations based on the light level data. The light level curve will tell you the optimal time period of sunlight in a day and you can set the automatic charging schedule accordingly for your SwitchBot Curtain U Rail 3.

Delay

You can set a delay for a countdown action including countdown time, percentage of opening or closing, and Motion mode.

Schedules

You can set up to 5 Schedules locally on your device, or unlimited Schedules when used with a SwitchBot Hub. You are able to set the day, time, percentage of opening or closing, and Motion mode.

Charging, Firmware Upgrades, and Resetting Factory Settings

Charging

It takes about 6.5 hours to fully charge your device battery and this can last for up to 8 months after one full charge. You may also purchase SwitchBot Solar Panel to charge using sunlight.

1. A 5V=1A adapter is required to charge your device.
2. Battery life is tested by opening and closing 8 kg (17 lbs) curtains on a 3-meter-long track once a day under temperature conditions of 25 °C. Actual battery life may vary depending on different conditions.
3. With only 3 hours per day exposed under sunlight that can cast clear shadow, SwitchBot Solar Panel can generate sufficient power to sustain your SwitchBot Curtain U Rail 3 forever. The upgraded Solar Panel greatly improved efficiency even under weak sunlight. As long as your window can receive sunlight, we recommend purchasing our Solar Panel to charge your device. This way, you can ensure that your SwitchBot Curtain U Rail 3 remains powered and ready to use whenever you need it.

Firmware Upgrades

In order to improve user experience, we will regularly release firmware updates to introduce new functions and solve any software defects that may occur during usage. When a new firmware version is available, we will send an upgrade notification to your account via our app. When upgrading, please make sure your product has sufficient battery and make sure your smartphone is within range to prevent interference.

Resetting Factory Settings

Resetting Factory Settings

Use the reset tool provided to press and hold the Reset button for 3 seconds until the indicator light is visible and then release.

Specifications

Model:

Color:

Material:

Size (Main Unit):

Weight (Main Unit):

Power:

Battery Life:

Network Connectivity:

Strength:

Max Runway:

Schedule:

Voice Control (SwitchBot Hub Required):

Assistant:

Shortcuts:

SmartThings:

IFTTT:

Works with:

SmartThings:

IFTTT:

Works with:

SmartThings:

IFTTT:

Works with:

SmartThings:

IFTTT:

Works with:

SmartThings:

IFTTT:

Works with:

SmartThings:

IFTTT:

Works with:

SmartThings:

IFTTT:

Works with:

SmartThings:

IFTTT:

Works with:

SmartThings:

IFTTT:

Works with:

SmartThings:

IFTTT:

Works with:

SmartThings:

IFTTT:

Works with:

SmartThings:

IFTTT:

Works with:

SmartThings:

IFTTT:

Works with:

SmartThings:

IFTTT:

Works with:

SmartThings:

IFTTT:

Works with:

SmartThings:

IFTTT:

Works with:

SmartThings:

IFTTT:

Works with:

SmartThings:

IFTTT:

Works with:

SmartThings:

IFTTT:

Works with:

SmartThings:

IFTTT:

Works with:

SmartThings:

IFTTT:

Works with:

SmartThings:

IFTTT:

Works with:

SmartThings:

IFTTT:

Works with:

SmartThings:

IFTTT:

Works with:

SmartThings:

IFTTT:

Works with:

SmartThings:

IFTTT:

Works with:

SmartThings:

IFTTT:

Works with:

SmartThings:

IFTTT:

Works with:

SmartThings:

IFTTT:

Works with:

SmartThings:

IFTTT:

Works with:

SmartThings:

IFTTT:

Works with:

SmartThings:

IFTTT:

Works with:

SmartThings:

IFTTT:

Works with:

SmartThings:

IFTTT:

Works with:

SmartThings:

IFTTT:

Works with:

SmartThings:

IFTTT:

Works with:

SmartThings:

IFTTT:

Works with:

SmartThings:

IFTTT:

Works with:

SmartThings:

IFTTT:

Works with:

SmartThings:

IFTTT:

Works with:

SmartThings:

IFTTT:

Works with:

SmartThings:

IFTTT:

Works with:

SmartThings:

IFTTT:

Works with:

SmartThings:

IFTTT:

Works with:

SmartThings:

IFTTT:

Works with:

SmartThings:

IFTTT:

Works with:

SmartThings:

IFTTT:

Works with:

SmartThings:

IFTTT:

Works with:

SmartThings:

IFTTT:

Works with:

SmartThings:

IFTTT:

Works with:

SmartThings:

IFTTT:

Works with:

SmartThings:

IFTTT:

Works with:

SmartThings:

IFTTT:

Works with:

SmartThings:

IFTTT:

Works with:

SmartThings:

IFTTT:

Works with:

SmartThings:

IFTTT:

Works with:

SmartThings:

IFTTT:

Works with:

SmartThings:

IFTTT:

Works with:

SmartThings:

IFTTT:

Works with:

SmartThings:

IFTTT:

Works with:

SmartThings:

IFTTT:

Works with:

SmartThings:

IFTTT:

Works with:

SmartThings:

IFTTT:

Works with:

SmartThings:

IFTTT:

Works with:

SmartThings:

IFTTT:

Works with:

SmartThings:

IFTTT:

Works with:

SmartThings:

IFTTT:

Works with:

SmartThings:

IFTTT:

Works with:

SmartThings:

IFTTT:

Works with:

SmartThings:

IFTTT:

Works with:

SmartThings:

IFTTT:

Works with:

SmartThings:

IFTTT:

Works with:

SmartThings:

IFTTT:

Works with: